



LF Donut Specification Sheet

Description: BMP CB Donut is a bright orange and yellow porous foam filled ring attached to filter fabric. The product wraps around and secured to a removed catch basin grate, which is then replaced into the catch basin frame after installation.

LF Donut Specification Sheet	
Foam Cover Fabric:	R 2283 HDPE Monofilament (High Density Polyethylene)
Body Fabric:	Black/Grey High Strength Woven Filter Fabric
Foam:	4" Height Open Cell Foam
Grate Size:	Fits grates: 24"x16", 21"x18" (custom sizes also available)
Grab Tensile:	ASTM-D-4632 – 315 lb
Compressed Size:	8" x 10" x 4"
Expanded Size:	Varies depending on Part Number
Permittivity:	ASTM-D-4491: 0.70 (s-1)
Water Flow Rate:	ASTM-D-4491: 50+ gal/min/ft ²
Optional:	CIF6048 Curb Inlet Filter for grates with Curb Inlets

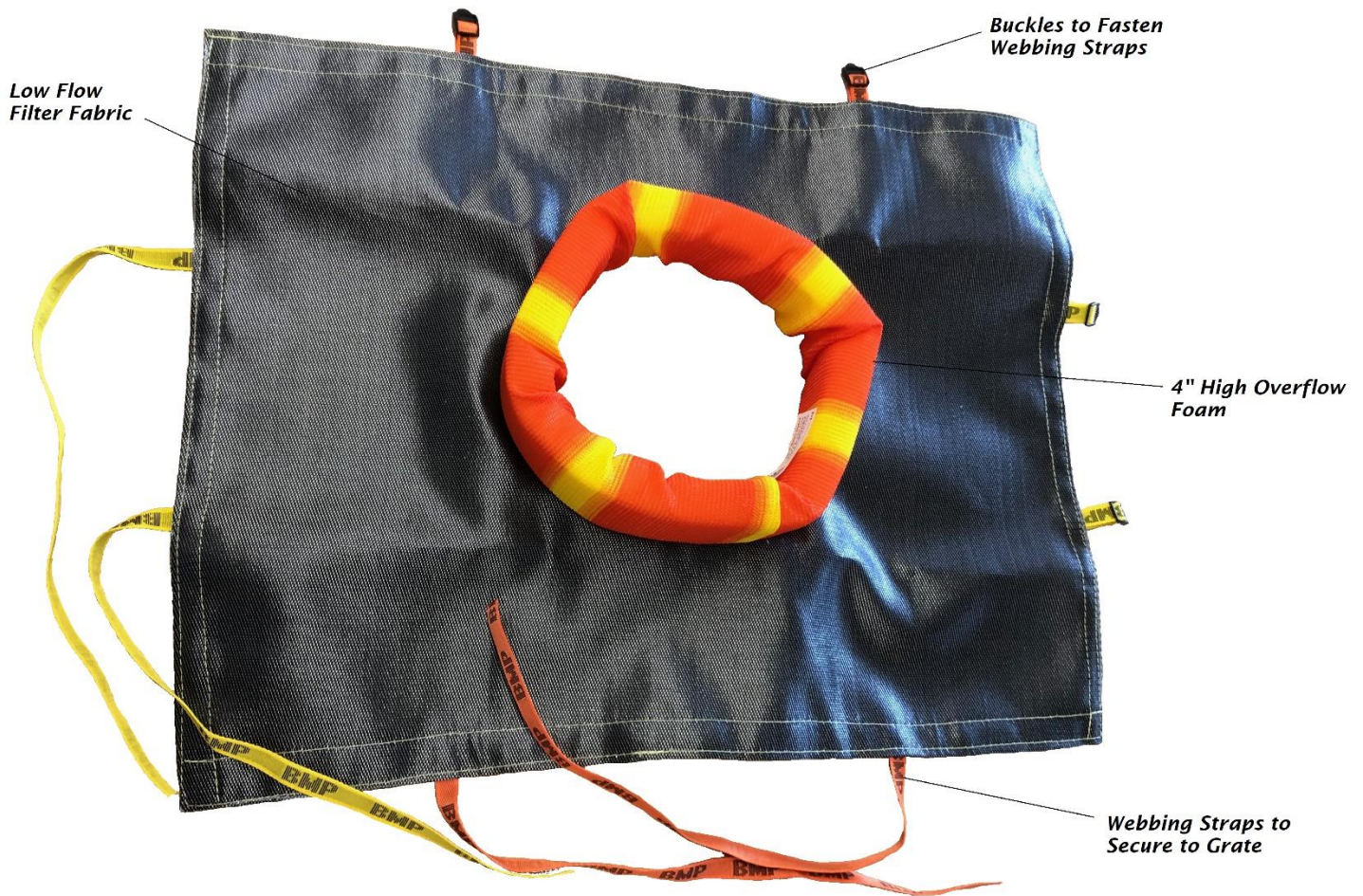
Approximate Weight/Dimensions (varies with size):		
Size Deployed (approx.)	Sizes Vary	1-2 lbs
Shipping Size (per bag of 12)	36" x 14" x 20"	12-24 lbs
Per Pallet (192 Pieces)	40" x 48" x 85"	220-460 lbs

The information contained herein is furnished without charge or obligation and the recipient assumes all responsibility for its use. Because conditions of use and handling may vary and are beyond our control, we make no representation about, and are not responsible or liable for the accuracy and reliability of said information or the performance of any product. Any specification, property or application listed herein are provided as information only and in no way modify, amend, enlarge or create any warranty. Nothing contained herein is to be construed as permission or as a recommendation to infringe any patent.





LF Donut Diagram:



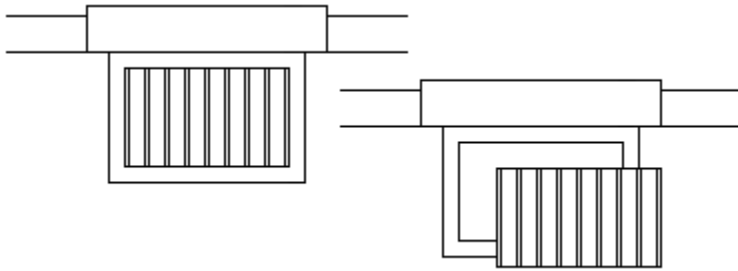
Canadian Patent #2,414,270 – United States Patent #7,070,691

The information contained herein is furnished without charge or obligation and the recipient assumes all responsibility for its use. Because conditions of use and handling may vary and are beyond our control, we make no representation about, and are not responsible or liable for the accuracy and reliability of said information or the performance of any product. Any specification, property or application listed herein are provided as information only and in no way modify, amend, enlarge or create any warranty. Nothing contained herein is to be construed as permission or as a recommendation to infringe any patent.

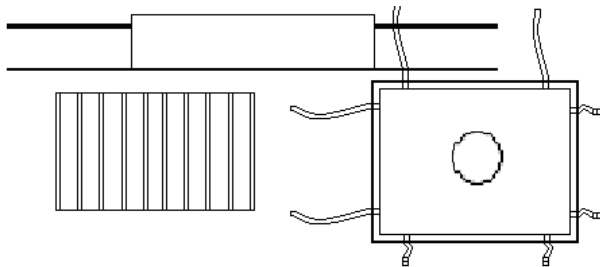


BMP Donut Installation:

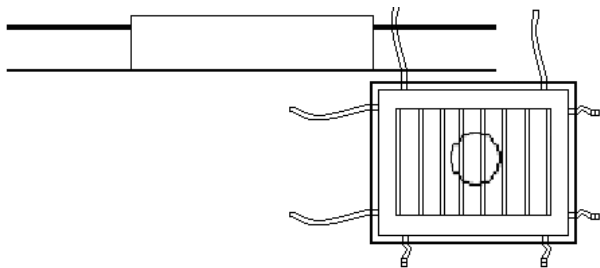
1) Remove the grate and set aside. Using a steel brush and/or scraper, clean the edge that supports the grate from dirt and gravel.



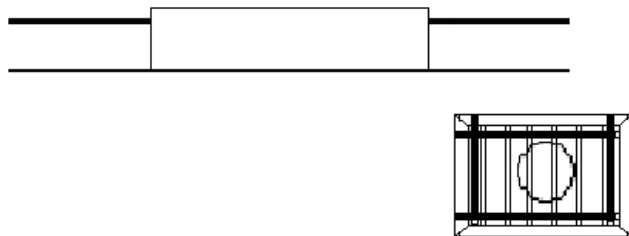
2) Lay the donut upside down on the road surface.



3) Place the grate upside down on the donut fabric.



4) Loosely connect the webbing straps across the grate to the corresponding buckles. Individually slowly tighten the straps while tucking the corner fabric in toward the center.



5) Turn over and replace the grate into the grate frame.

